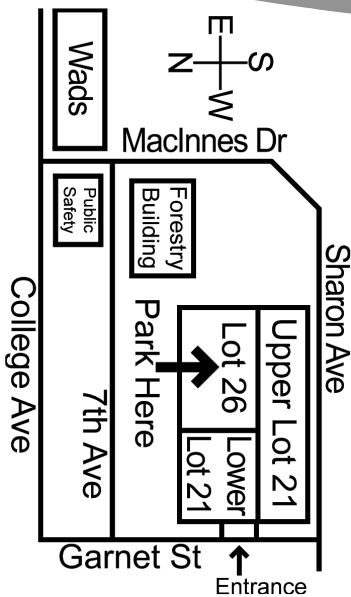


You Deserve a Break!

Housing & Residential Life

Fall Break Information • November 2008



Parking

We encourage you to leave your car at home if you don't use it on a regular basis due to the narrowing of parking lots in the winter.

If you are leaving your vehicle on campus during break, you must park it in the northwest side of Lot 26 **by Sunday, November 23 and move it back into your assigned lot by Sunday, November 30 by 11:00 PM.** If you leave it in your assigned lot, it may be towed away at owner's expense. For more information, see your RA's posting board.

Staying

If you are planning to stay in the hall during break, you must register at the reception desk by Thursday, November 20. You must also register if you are returning early, prior to November 30. There is no extra charge to stay over fall break.

If you have any questions or concerns during the normal working day, please contact the Housing & Residential Life Office at 7-2682, housing@mtu.edu or 153 Wadsworth Hall. After hours and holidays, please contact Public Safety at 7-2216 or for emergencies, call 8-911.

Meal Schedule

DHH

| Monday – Friday | November 17 – 21 |
|--------------------------|-------------------------|
| Continental Breakfast | 7:00 AM – 10:30 AM |
| Lunch | 10:30 AM – 1:15 PM |
| Monday – Thursday | November 17 – 20 |
| Deli Hour | 1:15 PM – 4:00 PM |
| Dinner | 4:00 PM – 6:00 PM |

McNair

| Monday – Friday | November 17 – 21 |
|--------------------------|-------------------------|
| Continental Breakfast | 7:00 AM – 10:30 AM |
| Lunch | 10:30 AM – 1:15 PM |
| Monday – Thursday | November 17 – 20 |
| Deli Hour | 1:15 PM – 4:00 PM |
| Dinner | 4:00 PM – 9:00 PM |

Wads

| Monday – Friday | November 17 – 21 |
|------------------------|-------------------------|
| Breakfast | 7:00 AM – 9:00 AM |
| Continental Breakfast | 9:00 AM – 10:30 AM |
| Lunch | 10:30 AM – 1:15 PM |
| Deli Hour | 1:15 PM – 4:00 PM |
| Dinner | 4:00 PM – 6:00 PM |

Friday, November 21 dinner served in Wadsworth Hall only.

Reception Desks

All residence hall reception desks will close at 8:00 PM on Friday, November 21, and will reopen for normal business at 10:00 AM on Monday, December 1. Mail service will be limited during the break.

All checked-out items must be returned to the desk by 8:00 PM on Thursday, November 20.

Energy & Room Security

- Close and lock your windows.
- Unplug any nonessential electrical equipment (refrigerators with food may be left connected).
- Turn off your lights.
- Lock your doors.



Dining Halls

The Dining Halls will close at lunch in DHH and McNair, and at dinner in Wads on Friday, November 21.

Dining Halls will reopen for breakfast Monday, December 1 at the normal serving hours.

Campus Café

The Campus Café will be closed on Friday, November 21 at 4:00 PM and will reopen on Sunday, November 30 at 5:00 PM.

Memorial Union Building

Convenience Store:

- Open Friday, November 21 from 7:30 AM – 3:00 PM
- Closed Saturday – Sunday, November 22 – 30.

Food Mall:

- Open Friday, November 21 and Monday – Wednesday, November 24 – 26 from 7:30 AM – 3:00 PM
- Closed Saturday – Sunday, November 22 – 23, and Thursday – Sunday, November 27 – 30.

Kitchenettes

Kitchenettes will be open in all residence halls over the break period.

Hall Security

All residence hall entrances will be locked at 8:00 PM on Friday, November 21. You can enter the building using your student ID while the doors are locked. The main entrance doors will reopen on Sunday, November 30 at 12:00 noon.

MichiganTech

Michigan Technological University is an equal opportunity educational institution/equal opportunity employer.

Decorating

Guidelines for holiday decorations:

- Trees and other decorations are only allowed in student rooms.
- To decorate in other areas, see the Housing Facilities Manager for approval.
- Natural trees are permitted, but specific guidelines apply. See the Housing Facilities manager.
- All electric items must have UL seal approval.
- No candles or flammable decorations.
- No electric devices are allowed on metallic trees.
- Decorations must be removed by no later than 3:00 PM on December 19.
- Place discarded trees and decorations in the outside dumpster.

IRHC Rideboard

- Need to go somewhere? You can post a ride request for others to see.
- Are you making a roadtrip and looking for an extra rider? Post your trip and others will find you.
- Commuting to Tech and want to save gas? Make a carpool listing today.

<http://irhc.students.mtu.edu/orb/>

Bikes

Bikes must be removed from the racks by Friday, November 21. Bike locks will be cut and bikes will be left unsecured after this date. This is necessary in order to move bike racks for snow removal. Once the racks are moved, you may use them at East McNair if you choose.

The East McNair bikes and racks do not need to be moved.

Bike Storage

On-campus storage for your bike will be available **Sunday, November 16 from 2:00 PM – 4:00 PM** through your hall council.

- DHHC- office (near the all-campus study lounge)
- MHA- west storage (near the courtyard)
- WHSA- office (Wads G05)

